



Pump station | Sewage lifting | Oil-water separation | sewerage treatment

Smart controllers for the water industry



Ebara Densan (Qingdao) Technology Co., Ltd.



Company Introduction

Ebara Densan (Qing Dao) Technology Co., Ltd was founded in 2006, which is a 100% subsidiary of Ebara Corporation (Established in 1912) in Qingdao. It focuses its business on the design and manufacturing of intelligent electrical control panels, integration of electrical automatic control systems, intelligent manufacturing and industrial IoT related products and services. It is also devoted to provide full-on solution and services of automation and intelligence for the industries of China which is rapidly growing, and propel its domestic manufacturing industries to a higher level in intelligence, delicacy and quality.

Located in the Qingdao industry park of Cheng Yang, Qingdao, Ebara Densan covers an area of 5400 square meters, of which the building area is 5000 square meters. There are about 170 employees currently, including: 2 PHDs; 6 Masters, 6 overseas returnees, 15 employees with the technical titles on intermediate or advanced level. 40.6% of the employees have bachelor degrees or above, and the average age is 34 years old. Ebara Densan has gathered a group of young talents in the industry, which forms the basis to realize our corporation vision-- "to be the representative of the highest level in the automatic control equipment and the system integration industry".



DSLC

Domestic Sewage Lift Controller



EBARA

Smart Controller

ESPC

Expert Sewage Pump Controller



CSLC

Commercial Sewage Lift Controller





ESLC

Easy Sewage Lift Controller

High stability

Good interactivity

Universality

High protection level

This product is a pump controller with direct plug-in power supply, suitable for household sewage lifting or rainwater lifting. It can achieve smart control of a single water pump and comprehensive fault protection and warning; It has remote monitoring function to achieve scenario based application of smart home.

Product Advantages



High stability

Use international first tier brand components with high stability.



No installation required

Direct insertion design with partial opening on the back for convenient wiring.



Sense of technology

Minimalist technological appearance, ultra modern smart home style.



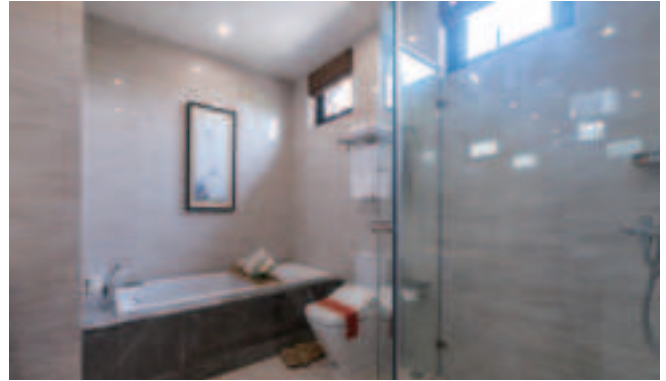
Good interactivity

Touch screen design, user-friendly interface, intuitive operation.

Application Scenario



Sunken courtyard rainwater lifting



Basement sewage lifting

Product Function

- 1 Manual/automatic mode
- 2 Dynamic display of running status
- 3 Sound and light alarm for fault protection
- 4 Sensor redundancy control
- 5 Running/fault record query
- 6 Automatic inspection



Model

ESLC-Q

(Air pressure type)

ESLC-F

(Floating ball type)

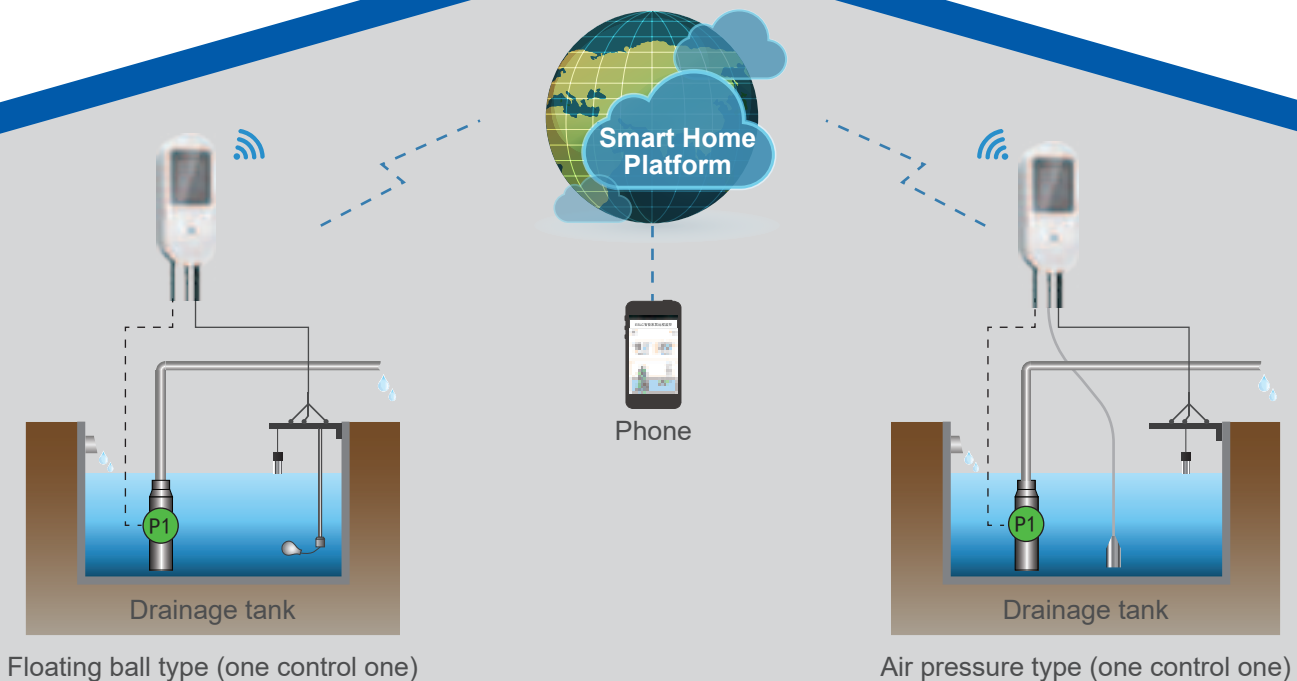
ESLC-P

(Water pump built-in floating ball type)



Size

L200*W80*H53(mm)



Floating ball type (one control one)

Air pressure type (one control one)

DSL/C

Domestic Sewage Lift Controller

High stability

Good interactivity

Universality

High protection level



This controller is suitable for monitoring and controlling sewage lifting pumps, supporting floating ball and air pressure water level sensors, and can control up to 2 single-phase 2.2kW water pumps.

Product Advantages



High stability

Use international first tier brand components with high stability.



Good interactivity

Touch screen design, user-friendly interface, intuitive operation.



Universality

Single/double pumps alternating operation, universal for air pressure/floating ball.



High protection level

IP65 protection level, flip cover design to protect touch screen.

Application Scenario



Sunken courtyard rainwater lifting



Basement sewage lifting

Product Function

- 1 Manual/automatic mode
- 2 Dynamic display of running status
- 3 Sound and light alarm for fault protection
- 4 Sensor redundancy control
- 5 Running/fault record query
- 6 Automatic inspection



Model

DSLQ-1Q /2Q-W

(Air pressure type which can be optionally equipped with WiFi)

DSLQ-1F/2F-W

(Floating ball type which can be optionally equipped with WiFi)

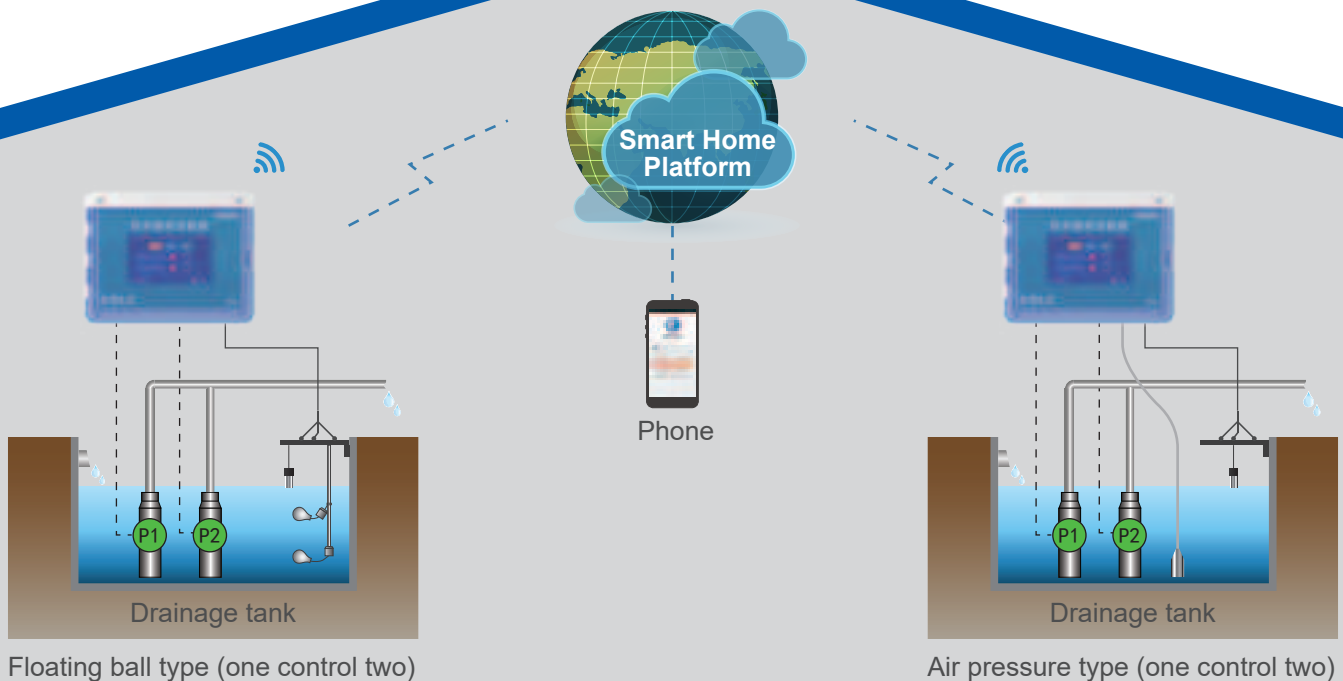
DSLQ-1P/2P

(Water pump built-in floating ball type)



Size

L202*H156*D67(mm)



CSLC

Commercial Sewage Lift Controller

High stability

Good interactivity

High safety

Universality



This product is a three-phase input sewage lifting controller, suitable for commercial or other three-phase water pump control scenarios. It can achieve smart control of one or two water pumps and comprehensive fault protection and warning. It has remote monitoring function, and the interior and exterior appearance are upgraded comprehensively.

Product Advantages



High stability

Use international first tier brand components with high stability.



Good interactivity

Touch screen design, user-friendly interface, intuitive operation.



High safety

The safety barrier design inside the cabinet make the operation safer.



Universality

Universal domestically and internationally, with optional emergency stop button.

Application Scenario



Subway water drainage



Commercial complex water drainage

Product Function

- 1 Manual/automatic mode
- 2 Dynamic display of the running status
- 3 Sound and light alarm for fault protection
- 4 Sensor redundancy control
- 5 Running/fault record query
- 6 Automatic inspection
- 7 Phase lacking, phase failure, overvoltage and undervoltage protection
- 8 Single phase/three-phase compatibility



Model

CSLC-1Q (Single/three phase)

CSLC-2Q (Single/three phase)

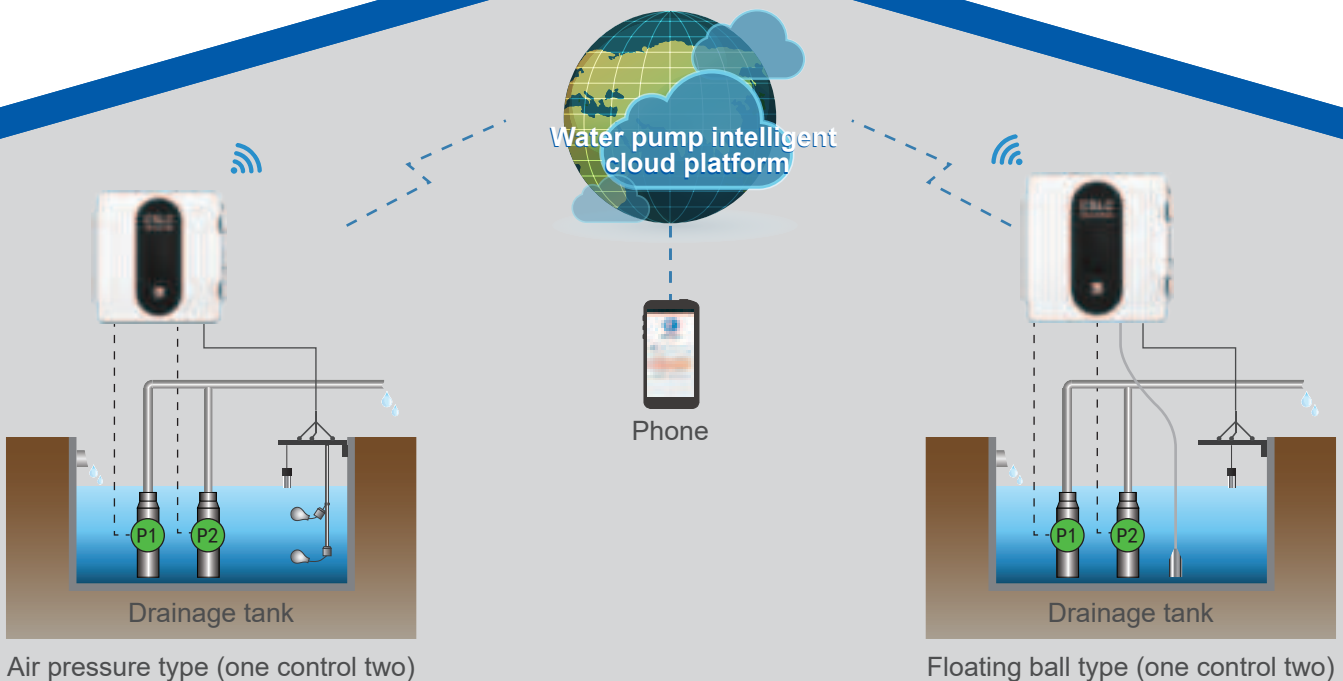
CSLC-1F (Single/three phase)

CSLC-2F (Single/three phase)



Size

L300*W300*H110 (mm)



ESPC

Expert Sewage Pump Controller

High stability

Good compatibility

Multi-mode

Full function



This product is suitable for sewage lifting, pump station control, or water supply control of 2 water pumps (2.2kW-11kW). The control system adopts high-performance microprocessors, which can achieve various control modes such as manual, automatic, or remote. The modular design can achieve the control of 3 pumps and grilles through selecting multiple expansion boards, and with more expansion interfaces.

Product Advantages



High stability

Use international first tier brand components with high stability.



Multi-modes

Multiple modes can be switched freely in scenarios such as sewage lifting, pump stations, and water supply.



Good compatibility

Single/three-phase power supply connection, floating ball/air pressure sensor/liquid level gauge optional.



Full function

Modular design, more expansion interfaces, optional functions such as water leakage/over temperature protection.

Application Scenario



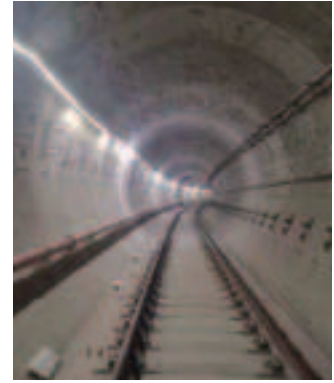
Hospital



Shopping mall



Rural sewage treatment
(Small pump station)



Subway drainage

Product Function

- 1 Manual/automatic mode
- 2 Comprehensive status monitoring
- 3 Sound and light alarm for fault protection
- 4 Phase sequence/phase lack protection
- 5 Pump water leakage/over temperature protection
- 6 Running/fault record query
- 7 High liquid level pump stop delay and the maximum running time of a single pump can be set



Model

ESPC (W299*H370*D120mm)

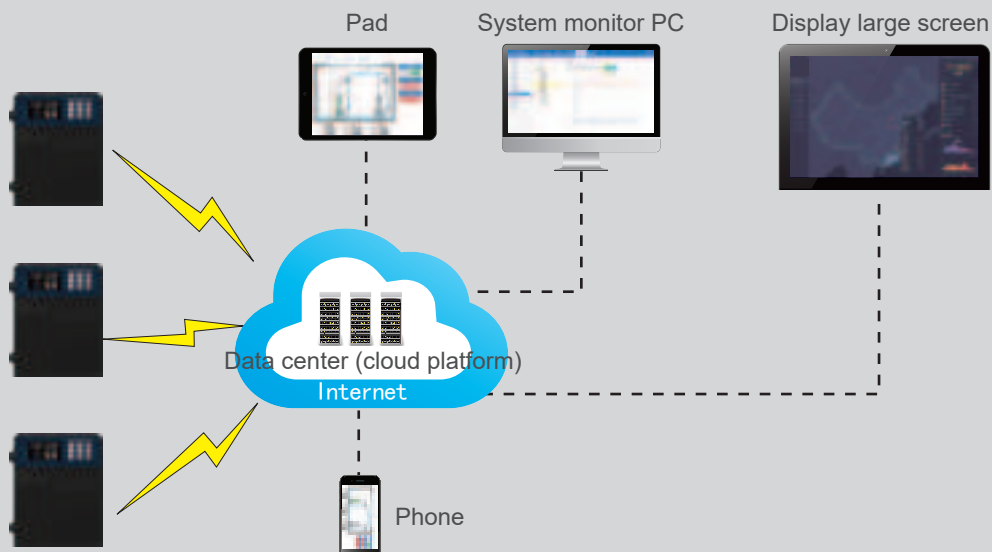
ESPC -S (420*355*250mm)



ESPC



ESPC-S
(Support customization)



※ Need to be equipped with a remote monitoring data collection module for use.

WOSC

Water & Oil Separation Controller

Expandability

Universality

Reliability

Operability



single phase



Three phase

This series of controllers can be adapted to all kinds of oil-water separation systems, through local intelligent control remote digital monitoring, help the oil-water separation system efficient, stable and reliable operation through flexible configuration function, can freely achieve port function definition, matching control logic.

Product Advantages



Configurable functions

Customization of each IO port function, flexibly matching various control logics.



Reliable protection

Comprehensive sound and light alarm of rotation lock, short circuit, no-load, over voltage and under voltage.



Smart management

Smart service, remote IOT, 7*24 hour appointment control.



Super long service life

IP65 protection level, using International famous brand of electrical component.

Application Scenario



Home kitchen



commercial kitchen

Product Function

Integrate years of industry experience in oil-water separation control, and build a modular and configurable product structure. Based on core processing unit with ultra strong computing power, combined with various expansion modules, achieve more control functions.

Standard single phase controller WOSC-S

DO(2.2kw)	DI	PT100	485	WIFI
5	3	1	1	1

Expansion module WOSC-OP

DO(2.2kw)	AI(4~20mA)
2+	2+



IO Port Configuration

slag removal	heating
deodorization	oil drainage
backwashing	mixing
air flotation	sewage discharge



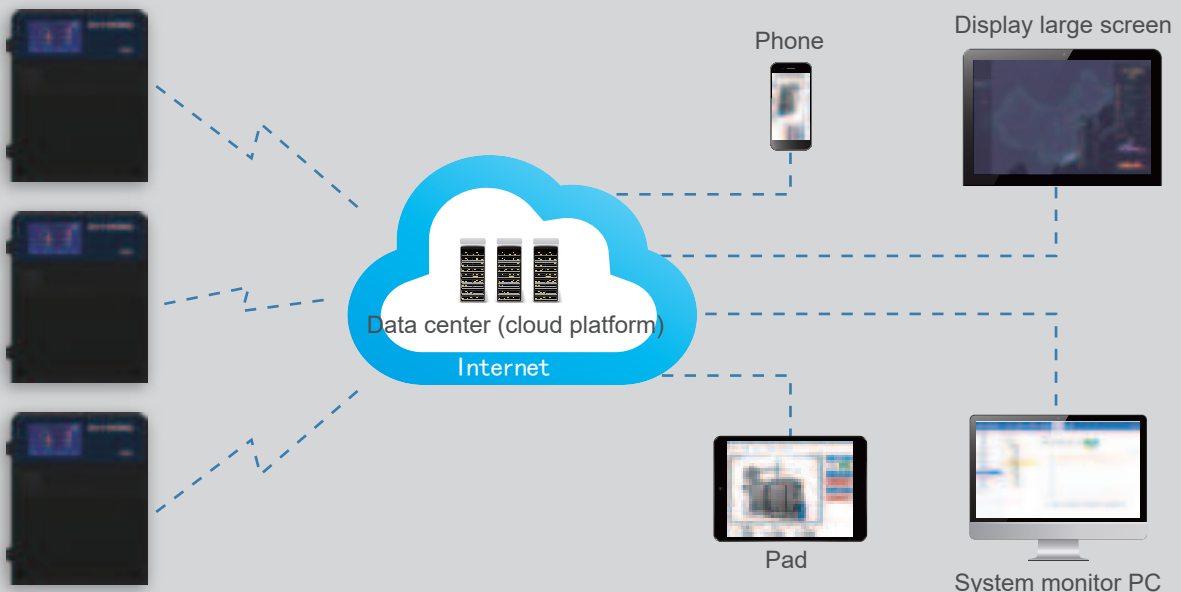
Sensor Type

flow sensor
weighing sensor
temperature sensor
oil level sensor



Control Mode

manual
automatic
timer control
remote control



GWPC

Generality Water Pump Controller

Expandability

Universality

Reliability

Operability



This product is a universal water supply and drainage controller suitable for all application scenarios in the water supply and drainage industry, which can realize the controlling of 1-4 water pumps; It has ultra-high stability and flexible expandability, which can perfectly replace PLC and achieve remote upgrade and monitoring.

Product Advantages



Expandability

Strong expandability, adopting modular design concept, multiple modes.



Universality

Good universality, specialized in control in the water supply and drainage industry.



Reliability

High reliability, using top-level components, with high protection techniques of the base plate.



Operability

The terminals can be directly inserted and removed for easy maintenance, and can be installed on rails or installed directly.

Application Scenario



Industrial wastewater treatment



Urban wastewater treatment



Rural wastewater treatment

Product Function

Main control module(201)

- Double pumps control (one control two)
- Grille control (forward and reverse)
- Four floating balls and one liquid level (4-20mA)
- Motor protection
- Double pumps running status output
- Total fault alarm/total running output
- Touch screen interface
- Remote monitoring module interface

Expansion module(202)

- Double pumps control (expanding to two water pumps)
- Two floating ball connected
- Double pumps fault indication and protection

Expansion module(301)

- Input voltage detection
- Four water pumps current detection
- No load/overload fault output

Analog expansion module(401)

- Hydrogen sulfide detection
- Standard exceeding alarm
- Fan linkage control

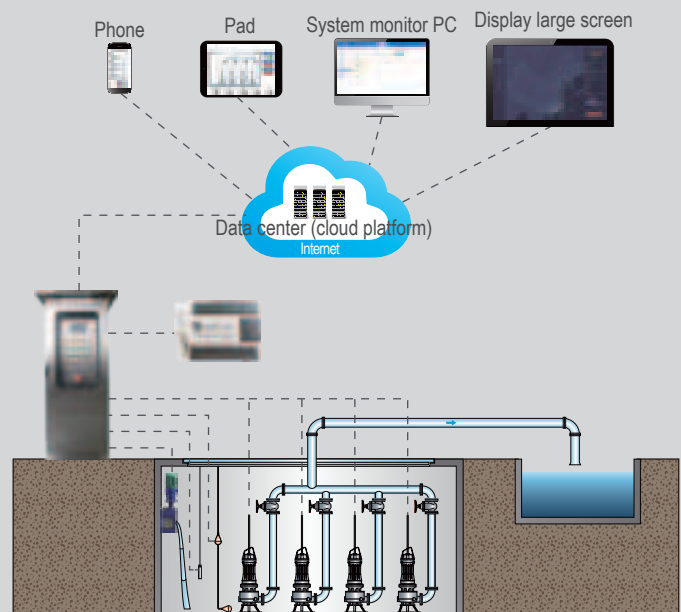
(Double function mode, dialing optional)

- Flow inspection
- Flow status output
- Analog interface expansion



Advantages compared with PLC

- Lower cost control and higher product cost-effectiveness.
- Higher standardization ability and easier to control product quality.
- Better protective treatment technique and more complex environmental adaptability.
- Both universal and specialized, better meeting the needs of the water supply and drainage industry.
- Pre set the program before leaving the factory to reduce the manual cost of self-control.
- Similar appearance with PLC makes it easier to comply with bidding requirements.





EBARA
Official Website



Tik Tok



YU-CON
Official Website

Scan code for more details

EBARA DENSAN (QINGDAO) TECHNOLOGY CO; LTD

Qingdao Headquarters

Add: No.216 Shuangyuan Road, Chengyang District, Qingdao City, Shandong Province, China

Tel: 400-0152-568

EBARA Website: www.edq-ebara.com

YU-CON Website: www.yu-con.com

Shanghai office

Add: Room 1102, Block B, Public Finance Building, 1023 Yan 'an West Road, Changning District, Shanghai, China

Tel: 021-62130060 021-62130070

Fax: 021-62130083