



AUTOMATION ENGINEERING **PROJECT CASES**



Looking ahead,
going beyond expectations
Ahead  *Beyond*

Ebara Densan (Qingdao) Technology Co., Ltd.

Water Supply Pumping Stations

SIHONG PUMPING STATION, JIANGSU, CHINA: The South-to-North Water Diversion Project in China is the largest ever undertaken. The project involves drawing water from southern rivers and supplying it to the dry north. 5 sets of 10kV class 2000kW cross-flow pumps were used, with a design flow rate of 120m³/s and a single unit flow rate of 30m³/s.

For this project, EDQ offers comprehensive support for electrical technical solutions, encompassing services related to electrical control cabinets and automatic control design.



Typical Cases:

- Sihong South-to-North Water Diversion Pumping Station
- South-to-North Water Diversion Secondary Dam Pumping Station
- Qingdao Fifth Pumping Station

Semiconductor Ultra-pure Water (UPW)

HEFEI JINGHE PROJECT, ANHUI, CHINA: The company primarily offers wafer foundry services ranging from 150nm to 90nm. Its products are mainly used in LCD panels for applications such as TVs, tablets, and mobile phones. The MMF system produces 1218 m³/h of water, while the ACF plus 2B3T de-ionized water production system yields 1212 m³/h. Additionally, the de-ionized RO water production system yields 1080 m³/h. The water treatment process includes pretreatment, 2B3T, RO treatment, MB, and UF. The factory is operational and running smoothly.

For this particular project, EDQ offers electrical and automatic control design, panel manufacturing, on-site construction, PLC and SCADA programming, and debugging services.



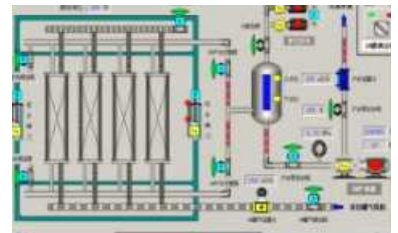
Typical Cases:

- SMIC Ultra-pure Water
- Hefei Changxin Ultra-pure Water
- Shengmei Semiconductor Ultra-pure Water
- Huahong Semiconductor Ultra-pure Water

Municipal Sewage Treatment Project

YANTAI FUSHAN SEWAGE TREATMENT PLANT, SHANDONG, CHINA: To achieve centralized treatment of urban sewage, we utilize the AAO + vertical precipitation + MBR process, which has a daily treatment capacity of 20,000 tons. The discharge standard is GB18918-2002, which is a first-class A standard.

EDQ provides electrical and automatic control design, panel manufacturing, on-site construction, PLC and SCADA programming and debugging services.



Typical Cases:

- Yantai East Hall Sewage Treatment Plant
- Yantai Huili Sewage Treatment plant
- Yantai Fushan Sewage Treatment Plant
- Dashiqiao Sewage Treatment Plant
- Dazu Sewage Treatment Plant

Industrial Waste-water Treatment Project

ZHENGZHOU FOXCONN, HENAN, CHINA: Asia's most prominent electronic foundry, mainly dealing with heavy metal waste-water recycling and reuse, with a treatment capacity of 1000m³/day, the process adopts conditioning tank + Fenton + biochemical physical chemistry + MBR + activated carbon + primary RO + secondary RO + EDI.

EDQ provides electrical and automatic control design, panel manufacturing, on-site construction, PLC and SCADA programming and debugging services



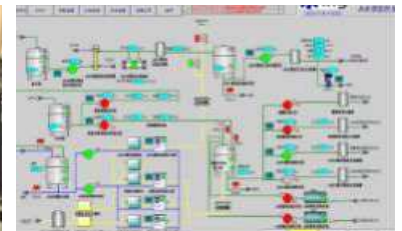
Typical Cases:

- Tesla Waste-water Treatment Project
- Zhongjing Arsenic-Containing Waste-Water Treatment
- Pulin Chengshan Water Reclamation Project
- COFCO Recycled Water Treatment Of Waste-water And Sewage
- Jinqiao Haiyang Waste-water Treatment Project

Drinking Water Treatment Project

NONGFU SPRING WATER, CHANGBAI MOUNTAIN FUSONG FACTORY, JILIN, CHINA: The water treatment workshop processes raw water from the naturally occurring spring of Changbai Mountain. The water undergoes filtration using quartz sand, ACF, UF membrane filtration, and UV sterilization. The water treatment output is 90,000 bottles per day, providing high-quality treated water for the final automated filling and packaging process to create finished goods.

EDQ provided comprehensive services encompassing electrical and automatic control design, panel manufacturing, on-site construction, PLC and SCADA programming, and commissioning for water treatment facilities and pre-treatment processes prior to filling.



Typical Cases:

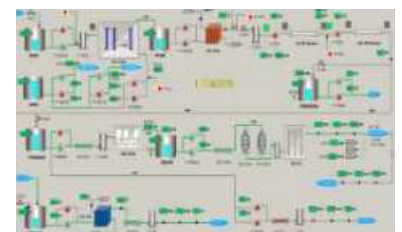
- Nongfu Spring Changbai Mountain Jingyu Factory
- Nongfu Spring Wuyishan Factory
- Tsingtao Beer Canning Production Line
- Nongfu Spring Chengde Factory

Industrial Pure Water Treatment Project

ZHEJIANG ZHONGJING NEW MATERIAL RESEARCH CO., LTD (MTCN), ZHEJIANG, CHINA:

The project provides pure water treatment solutions for high-end discrete devices and mono-crystalline silicon wafers for VLSI circuits, a 100m³/h ultra-pure water treatment capacity. The project adopts generic process of UF, double RO, EDI, and can provide 6 & 8 inches of polished silicon wafers.

EDQ provides electrical and automatic control design, panel manufacturing, on-site construction, PLC and SCADA programming, and debugging services for water treatment workshops.



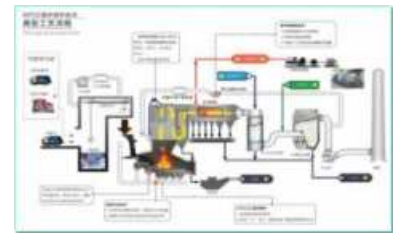
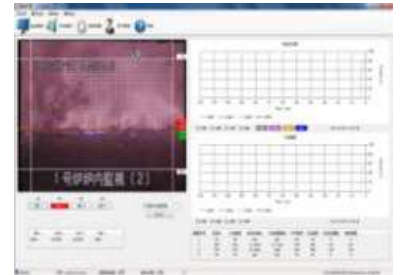
Typical Cases:

- Al Taweelah Sea Water Reverse Osmosis Desalination Plant (RO) Project, Abu Dhabi, UAE
- Block 9 Conventional Oilfield Pure Water Treatment Project, Iraq
- JCU Taiwan Corporation Surface Treatment Pure Water Project
- Mengyin Thermal Power Plant Boiler Pure Water Replenishment Project

Household Waste Incineration

WASTE INCINERATION PLANT IN WEIHAI, SHANDONG, CHINA: uses an EBARA environmental grate furnace core. It has an incineration capacity of 3,800 tons per day and can generate 97 million kWh of power per year, which is equivalent to saving 12,000 tons of standard coal each year.

EDQ provides comprehensive boiler control system design, panel cabinet production, programming, and debugging services.



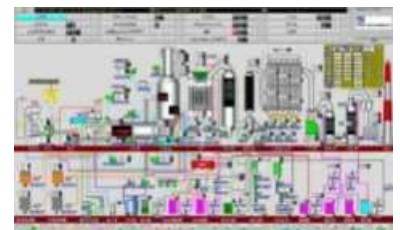
Typical Cases:

- Inner Mongolia Waste Incineration Power Plant
- Lushan County Household Waste Incineration Power Plant
- Yutian County Household Waste Incineration Power Plant
- Jishou Waste Incineration Power Plant
- Nanchang Quanling Waste Incineration Power Plant
- Zhumadian Waste Incineration Power Plant

Hazardous Waste Incineration

WASTE INCINERATION PROJECT IN NANCHONG, SICHUAN, CHINA: with a total investment of about 450 million yuan, covers an area of about 180 acres and can collect and dispose of 26 of the 49 types of hazardous wastes listed in the National Hazardous Waste List, with an annual processing capacity of 66,000 tons.

EDQ provided electrical and automatic control design, panels manufacturing, on-site construction, PLC and SCADA programming and commissioning services



Typical Cases:

- Nanchong Hazardous Waste Incineration Project
- Huanxin Shenyang Hazardous Waste Incineration Project
- Wenzhou Hazardous Waste Incineration Project
- Liaoning Hazardous Waste Incineration Project

CORE VALUES

Customer Oriented, Respect People & Devoted to Work,
Development in Harmony, Exploration & Innovation



CONTACT US

EBARA DENSAN (QINGDAO) TECHNOLOGY CO., LTD.

Add: No. 216, Shuangyuan Road, Chengyang, Qingdao, Shandong, China

Website: <https://en.edq-ebara.com>

Yucon Website: www.yu-con.com

Shanghai Office

No. 1023, Yanan West Road, Changning, Shanghai

Beijing Office

Add: No. 8, Yabao Road, Chaoyang, Beijing